



The Direct Path To Linux UBUNTU

MyWebUniversity.com

[Technical Documentation \(UNIX, LINUX, Windows\)](#)

[Search For Any Linux Manual Pages](#)



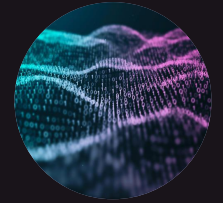
[MyWebUniversity Free Educational Videos - YouTube](#)

Thank For your Subscription and For Watching! Wahidullah Lutfy



MyWebUniversity Free Educational Videos

The Science Of Digital Transformation of Data



[MyWebUniversity Free Educational Videos - YouTube](#)

THE DIRECT PATH TO LINUX UBUNTU

TABLE OF CONTENTS

Preface

Chapter 1 About UNIX and Linux Operating Systems

Chapter 2 Basic UNIX and Linux commands

Chapter 3 Intermediate UNIX and Linux Commands

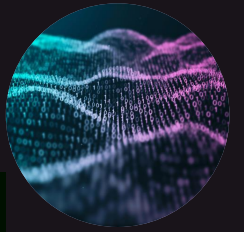
Chapter 4 Advanced UNIX and Linux Commands

Chapter 5 UNIX and Linux Shell Programming

Chapter 6 UNIX and Linux Web Servers

Chapter 7 Search for LINUX Manual Pages Dynamically





Chapter 1

About UNIX Operating Systems

The Direct Path To Linux UBUNTU

While there are many resources and information I could provide you related to the Linux Operating Systems, I would like to provide you a link from the bell-labs where the UNIX Operating systems was originally discovered in 1969. The AT&T bell laboratory later on become the Lucent Technology and merged with Alcatel as one company "Alcatel-Lucent". Here is [The invention of UNIX](#) for an overview of the UNIX* operating system. Please use this link to read about the history, the world's most important operating system invention, it's success, features and ongoing research. In addition, you should check on UNIX multi-tasking, multi-processing, multi-threading, portabilities, libraries, developers tools and resources features and functionalities.

Notice:This page may redirect you to other websites for more information, please use your browser back button to return to this page.

Your HomeWork

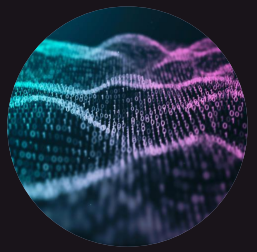
Please use your favorite websites or search engines such as [Google.com](#), [Manual Pages @MyWebUniversity](#) , or Our book "[The Direct Path to Linux Ubuntu](#) , or [Oracle.com](#) to search for the following strings and then read the one that is mostly beneficial to you.

- UNIX and LINUX
- UNIX and LINUX kernel
- UNIX and LINUX History
- UNIX and LINUX multitasking
- UNIX and LINUX multithreading
- UNIX and LINUX System administration
- UNIX and LINUX Solaris Sun Microsystems
- UNIX and LINUX rsh rcp rexec ftp telnet sshd
- UNIX and LINUX shells sh ksh bash csh tcsh zsh
- UNIX and LINUX ld as link make gcc mdb adb jdbd
- UNIX and LINUX manual pages man whatis whereis locate
- UNIX and LINUX Web Servers Apache Netscape Tomcat Iplanet
- UNIX and LINUX C C++ Lisp fortran pascal java perl mysql Oracle
- UNIX and LINUX programming languages applications libraries and tools
- My favorite UNIX Operating systems and Hardware company Sun Solaris by Sun Microsystems
- UNIX Solaris Mac OS X Linux FreeBSD BSD IRIX RedHat Fedora Cobalt CalderaAIX HP-UX Intergraph Clix DEC OSF1 AT&T

[MyWebUniversity Free Educational Videos - YouTube](#)

You can also use [MyWebUniversity.com](#) or [MyWebUniversity.com](#) search engines to search for UNIX related websites.





Basic UNIX and Linux Commands. The Direct Path To Linux UBUNTU

In this chapter you will learn about the following Linux Ubuntu commands that are listed in the table below. When you click on each command, you will be provided with three sections:

1. The 'whatis' section which describes what this command does. [MyWebUniversity Free Educational Videos - YouTube](#)
2. The 'man' section which shows the manual pages for command.
3. The 'Example' section which provides you with some of the examples.

Presented by: Wahidullah Lutfy

Select any command to start learning

<u>banner</u>	<u>cal</u>	<u>cat</u>	<u>clear</u>	<u>date</u>	<u>echo</u>	<u>head</u>	<u>hostname</u>	<u>host</u>	<u>id</u>
<u>info</u>	<u>paste</u>	<u>ps</u>	<u>pwd</u>	<u>uname</u>	<u>less</u>	<u>ls</u>	<u>man</u>	<u>mkdir</u>	<u>more</u>
<u>pg</u>	<u>ping</u>	<u>dig</u>	<u>nslookup</u>	<u>atrm</u>	<u>atq</u>	<u>sort</u>	<u>touch</u>	<u>w</u>	<u>who</u>



Chapter 3

The Direct Path To Linux UBUNTU

Intermediate Unix and Linux Commands.

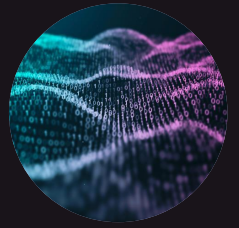
In this chapter you will learn about the following Linux Ubuntu commands that are listed in the table below. When you click on each command, you will be provided with three sections:

1. The 'whatis' section which describes what this command does. [MyWebUniversity Free Educational Videos - YouTube](#)
2. The 'man' section which shows the manual pages for command.
3. The 'Example' section which provides you with some of the examples.

Presented by: Wahidullah Lutfy

Select any command to start learning

<u>alias</u>	<u>bc</u>	<u>chgrp</u>	<u>chmod</u>	<u>chown</u>	<u>passwd</u>	<u>cmp</u>	<u>uncompress</u>	<u>xterm</u>	<u>cp</u>	<u>cut</u>
<u>df</u>	<u>diff</u>	<u>dirname</u>	<u>basename</u>	<u>du</u>	<u>eject</u>	<u>env</u>	<u>file</u>	<u>find</u>	<u>finger</u>	<u>grep</u>
<u>whatis</u>	<u>groups</u>	<u>gzip</u>	<u>egrep</u>	<u>kill</u>	<u>last</u>	<u>link</u>	<u>ln</u>	<u>pgrep</u>	<u>whereis</u>	<u>which</u>



Chapter 4

The Direct Path To Linux UBUNTU

Advanced Unix and Linux Commands.

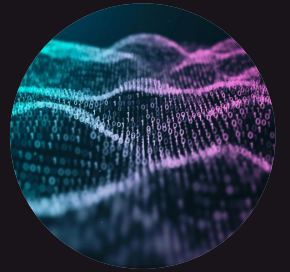
In this chapter you will learn about the following Linux Ubuntu commands that are listed in the table below. When you click on each command, you will be provided with three sections:

1. The 'whatis' section which describes what this command does. [MyWebUniversity Free Educational Videos - YouTube](#)
2. The 'man' section which shows the manual pages for command.
3. The 'Example' section which provides you with some of the examples.

Presented by: Wahidullah Lutfy

Select any command to start learning

useradd	userdel	usermod	groupadd	groupdel	groupmod	users	systemctl	catman	pwck	grpck
type	ext4	mkfs	wget	journalctl	Intro	lsattr	fstab	mount	pgrep	umount
pkill	pmap	gzip	pstree	grep	egrep	fgrep	set	setenv	services	env
curl	newtask	prctl	figlet	docker	systemd	ufw	sysstat	iscsiadm	stat	hostnamectl
pstree	pldd	pwdx	sd	tar	ldd	strace	core	adb	gcc	swapon
gdb	dd	savecore	gunzip	syslog	sysdef	modinfo	dtrace	nm	fork	lshw
netstat	iostat	vmstat	sar	cron	free	mpstat	time	nohup	exec	ncal
gcore	rpm	pkill	lsuf	Expr	screen	elf	tcpdump	ld	as	make



Advanced Unix and Linux Commands. The Direct Path To Linux Ubuntu

In this chapter you will learn about the following Linux Ubuntu commands that are listed in the table below. When you click on each command, you will be provided with three sections:

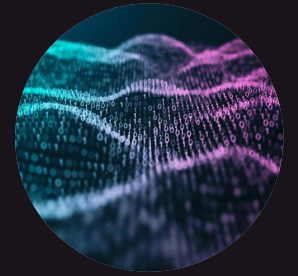
1. The '**whatis**' section which describes what this command does.
2. The '**man**' section which shows the manual pages for command.
3. The '**Example**' section which provides you with some of the examples.

Select any command to start learning

<u>useradd</u>	<u>userdel</u>	<u>usermod</u>	<u>groupadd</u>	<u>groupdel</u>	<u>groupmod</u>	<u>users</u>	<u>systemctl</u>	<u>catman</u>	<u>pwck</u>	<u>grpck</u>
--------------------------------	--------------------------------	--------------------------------	---------------------------------	---------------------------------	---------------------------------	------------------------------	----------------------------------	-------------------------------	-----------------------------	------------------------------



[MyWebUniversity Free Educational Videos - YouTube](#)
Presented by: Wahidullah Lutfy



Advanced Unix and Linux Commands. The Direct Path To Linux Ubuntu

In this chapter you will learn about the following Linux Ubuntu commands that are listed in the table below. When you click on each command, you will be provided with three sections:

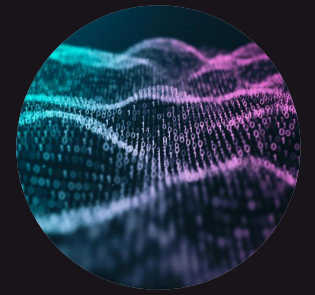
1. The '**whatis**' section which describes what this command does.
2. The '**man**' section which shows the manual pages for command.
3. The '**Example**' section which provides you with some of the examples.

Select any command to start learning

<u>type</u>	<u>ext4</u>	<u>mkfs</u>	<u>wget</u>	<u>journalctl</u>	<u>Intro</u>	<u>lsattr</u>	<u>fstab</u>	<u>mount</u>	<u>pgrep</u>	<u>umount</u>
-----------------------------	-----------------------------	-----------------------------	-----------------------------	-----------------------------------	------------------------------	-------------------------------	------------------------------	------------------------------	------------------------------	-------------------------------



[MyWebUniversity Free Educational Videos - YouTube](#)
Presented by: Wahidullah Lutfy



Advanced Unix and Linux Commands. The Direct Path To Linux Ubuntu

In this chapter you will learn about the following Linux Ubuntu commands that are listed in the table below. When you click on each command, you will be provided with three sections:

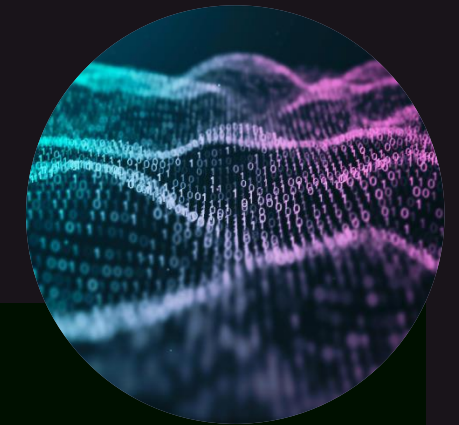
1. The '**whatis**' section which describes what this command does.
2. The '**man**' section which shows the manual pages for command.
3. The '**Example**' section which provides you with some of the examples.

Select any command to start learning

<u>pskill</u>	<u>pmap</u>	<u>gzip</u>	<u>pstree</u>	<u>grep</u>	<u>egrep</u>	<u>fgrep</u>	<u>set</u>	<u>setenv</u>	<u>services</u>	<u>env</u>
-------------------------------	-----------------------------	-----------------------------	-------------------------------	-----------------------------	------------------------------	------------------------------	----------------------------	-------------------------------	---------------------------------	----------------------------



[MyWebUniversity Free Educational Videos - YouTube](#)
Presented by: Wahidullah Lutfy



Advanced Unix and Linux Commands. The Direct Path To Linux Ubuntu

In this chapter you will learn about the following Linux Ubuntu commands that are listed in the table below. When you click on each command, you will be provided with three sections:

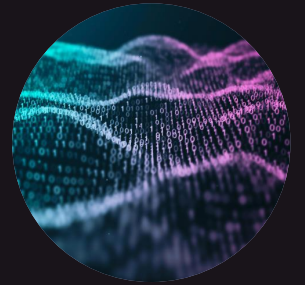
1. The '**whatis**' section which describes what this command does.
2. The '**man**' section which shows the manual pages for command.
3. The '**Example**' section which provides you with some of the examples.

Select any command to start learning

<u>curl</u>	<u>newtask</u>	<u>prctl</u>	<u>figlet</u>	<u>docker</u>	<u>systemd</u>	<u>ufw</u>	<u>sysstat</u>	<u>iscsiadm</u>	<u>stat</u>	<u>hostnamectl</u>
-----------------------------	--------------------------------	------------------------------	-------------------------------	-------------------------------	--------------------------------	----------------------------	--------------------------------	---------------------------------	-----------------------------	------------------------------------



[MyWebUniversity Free Educational Videos - YouTube](#)
Presented by: Wahidullah Lutfy



Advanced Unix and Linux Commands. The Direct Path To Linux Ubuntu

In this chapter you will learn about the following Linux Ubuntu commands that are listed in the table below. When you click on each command, you will be provided with three sections:

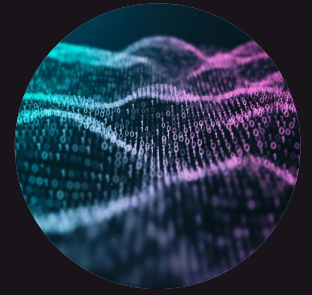
1. The '**whatis**' section which describes what this command does.
2. The '**man**' section which shows the manual pages for command.
3. The '**Example**' section which provides you with some of the examples.

Select any command to start learning

<u>pstree</u>	<u>pldd</u>	<u>pwdx</u>	<u>sd</u>	<u>tar</u>	<u>ldd</u>	<u>strace</u>	<u>core</u>	<u>adb</u>	<u>gcc</u>	<u>swapon</u>
-------------------------------	-----------------------------	-----------------------------	---------------------------	----------------------------	----------------------------	-------------------------------	-----------------------------	----------------------------	----------------------------	-------------------------------



[MyWebUniversity Free Educational Videos - YouTube](#)
Presented by: Wahidullah Lutfy



Advanced Unix and Linux Commands. The Direct Path To Linux Ubuntu

In this chapter you will learn about the following Linux Ubuntu commands that are listed in the table below. When you click on each command, you will be provided with three sections:

1. The '**whatis**' section which describes what this command does.
2. The '**man**' section which shows the manual pages for command.
3. The '**Example**' section which provides you with some of the examples.

Select any command to start learning

<u>gdb</u>	<u>dd</u>	<u>savecore</u>	<u>gunzip</u>	<u>syslog</u>	<u>sysdef</u>	<u>modinfo</u>	<u>dtrace</u>	<u>nm</u>	<u>fork</u>	<u>lshw</u>
-----------------------------------	----------------------------------	--	--------------------------------------	--------------------------------------	--------------------------------------	---------------------------------------	--------------------------------------	----------------------------------	------------------------------------	------------------------------------



[MyWebUniversity Free Educational Videos - YouTube](#)
Presented by: Wahidullah Lutfy



Advanced Unix and Linux Commands. The Direct Path To Linux Ubuntu

In this chapter you will learn about the following Linux Ubuntu commands that are listed in the table below. When you click on each command, you will be provided with three sections:

1. The '**whatis**' section which describes what this command does.
2. The '**man**' section which shows the manual pages for command.
3. The '**Example**' section which provides you with some of the examples.

Select any command to start learning

<u>netstat</u>	<u>iostat</u>	<u>vmstat</u>	<u>sar</u>	<u>cron</u>	<u>free</u>	<u>mpstat</u>	<u>time</u>	<u>nohup</u>	<u>exec</u>	<u>ncal</u>
--------------------------------	-------------------------------	-------------------------------	----------------------------	-----------------------------	-----------------------------	-------------------------------	-----------------------------	------------------------------	-----------------------------	-----------------------------



[MyWebUniversity Free Educational Videos - YouTube](#)
Presented by: Wahidullah Lutfy



Advanced Unix and Linux Commands. The Direct Path To Linux Ubuntu

In this chapter you will learn about the following Linux Ubuntu commands that are listed in the table below. When you click on each command, you will be provided with three sections:

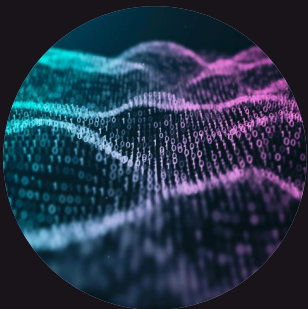
1. The '**whatis**' section which describes what this command does.
2. The '**man**' section which shows the manual pages for command.
3. The '**Example**' section which provides you with some of the examples.

Select any command to start learning

<u>gcore</u>	<u>rpm</u>	<u>pkill</u>	<u>lsof</u>	<u>Expr</u>	<u>screen</u>	<u>elf</u>	<u>tcpdump</u>	<u>ld</u>	<u>as</u>	<u>make</u>
------------------------------	----------------------------	------------------------------	-----------------------------	-----------------------------	-------------------------------	----------------------------	--------------------------------	---------------------------	---------------------------	-----------------------------



[MyWebUniversity Free Educational Videos - YouTube](#)
Presented by: Wahidullah Lutfy



CHapter 5 UNIX Shell Scripting

In this chapter you will learn about UNIX Shell Programming Language. You will see example which you can display the contents of each script and run the scrip in our Web Server to see how it works:

Shell Script	Display the script content	Run the script
The foreach.csh script	<code>cat foreach.csh</code>	<code>./foreach.csh</code>
The if-args.sh script	<code>cat if-args.sh</code>	<code>./if-args.sh 10 10</code>
The if-args.sh script	<code>cat if-args.sh</code>	<code>./if-args.sh 100 200</code>
The if-args.sh script	<code>cat if-args.sh</code>	<code>./if-args.sh 1000 1000</code>
The if-args.sh script	<code>cat if-args.sh</code>	<code>./if-args.sh 5 5</code>
The if-args.sh script	<code>cat if-args.sh</code>	<code>./if-args.sh 5000 4999</code>
The if-args.sh script	<code>cat if-args.sh</code>	<code>./if-args.sh 5</code>
The if-args.sh script	<code>cat if-args.sh</code>	<code>./if-args.sh</code>
The if-smaller-number.sh script	<code>cat if-smaller-number.sh</code>	<code>./if-smaller-number.sh</code>
The if.csh script	<code>cat if.csh</code>	<code>./if.csh</code>
The if-statement.sh script	<code>cat if-statement.sh</code>	<code>./if-statement.sh</code>



The Direct Path To Linux UBUNTU

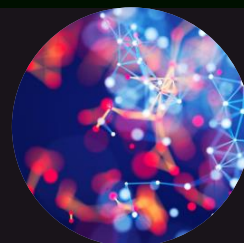
Chapter 6 UNIX Web Servers (Apache-22 on UNIX Solaris)

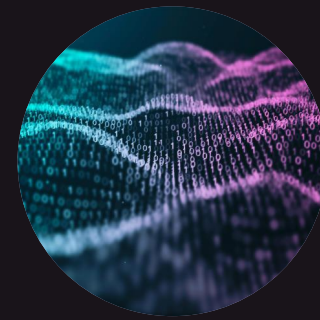
MyWebUniversity Free Educational Videos - YouTube

In this chapter you will learn

Presented by: **Wahidullah Lutfy**

<u>pkg info --license</u>	<u>httpd -v</u>	<u>httpd -V</u>	<u>httpd -h</u>
<u>httpd VHOST settings</u>	<u>httpd loaded Modules</u>	<u>List apache-22 contents (files and directories)</u>	<u>pkg list apache-22</u>
<u>pkg info apache-22</u>	<u>pkg search apache-22</u>	<u>pkg verify apache-22</u>	<u>apachectl</u>





The Direct Path To Linux Ubuntu

Enter any of the Linux commands to get manual pages:

Some Examples are: 'man', 'init', 'systemd', 'ps', 'kill', 'pgrep', 'pkill', 'pwdx', 'pmap', 'pstree', 'whatis', 'attributes', 'cp', 'mv', 'rm', 'fsck', 'mkfs', 'reboot', 'shutdown', 'cron', 'df', 'du', 'free', 'cpio', 'tar', '3 scanf', 'printf', 'fprintf', 'python', 'python3', 'pip3', 'gcc', 'g++', 'gdb', 'perl'

Presented by: **Wahidullah Lutfy**

```
SYSTEMD(1)                systemd                SYSTEMD(1)
NAME
    systemd, init - systemd system and service manager
SYNOPSIS
    /lib/systemd/systemd [OPTIONS...]
    init [OPTIONS...] {COMMAND} MyWebUniversity Free Educational Videos - YouTube
DESCRIPTION
    systemd is a system and service manager for Linux operating systems.
    When run as first process on boot (as PID 1), it acts as init system
    that brings up and maintains userspace services. Separate instances are
    started for logged-in users to start their services.

    systemd is usually not invoked directly by the user, but is installed
    as the /sbin/init symlink and started during early boot. The user
    manager instances are started automatically through the
    user@.service(5) service.

    For compatibility with SysV, if the binary is called as init and is not
    the first process on the machine (PID is not 1), it will execute
    telinit and pass all command line arguments unmodified. That means init
    and telinit are mostly equivalent when invoked from normal login
    sessions. See telinit(8) for more information.

    When run as a system instance, systemd interprets the configuration
    file system.conf and the files in system.conf.d directories; when run
    as a user instance, systemd interprets the configuration file user.conf
    and the files in user.conf.d directories. See systemd-system.conf(5)
    for more information.
CONCEPTS
    systemd provides a dependency system between various entities called
    "units" of 11 different types. Units encapsulate various objects that
    are relevant for system boot-up and maintenance. The majority of units
    are configured in unit configuration files, whose syntax and basic set
    of options is described in systemd.unit(5), however some are created
    automatically from other configuration, dynamically from system state
    or programmatically at runtime. Units may be "active" (meaning started,
    bound, plugged in, ..., depending on the unit type, see below), or
    "inactive" (meaning stopped, unbound, unplugged, ...) as well as in
```

NOTE: To continue learning please use the SEE ALSO section of each man page



Summary

In Chapter-4 of our book “The Direct Path To Linux Ubuntu”, we learned the “Advanced Linux Commands” using the Ubuntu Operating System. We covered about eighty-eight commands with some of them with a variable different number of examples. We demoed described all these commands both on online using our web interface @ [Advanced UNIX and Linux Commands](#) and will be posting the videos on [MyWebUniversity Free Educational Videos – YouTube](#)

Please subscribe to our YouTube channel, it is all Free, Thank you so much!



MyWebUniversity



[MyWebUniversity Free Educational Videos - YouTube](#)



MyWebUniversity Free Educational Videos

Thank For your Subscription and For Watching!
Wahidullah Lutfy